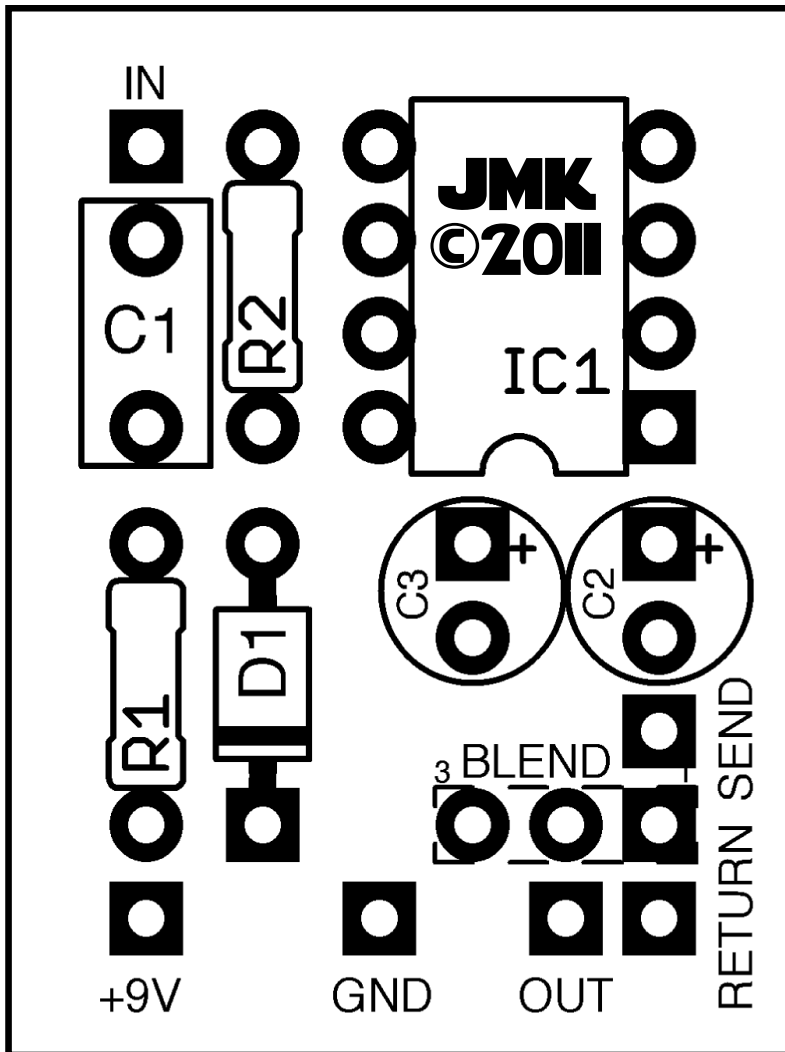


JMK PEDALS PRESENTS...

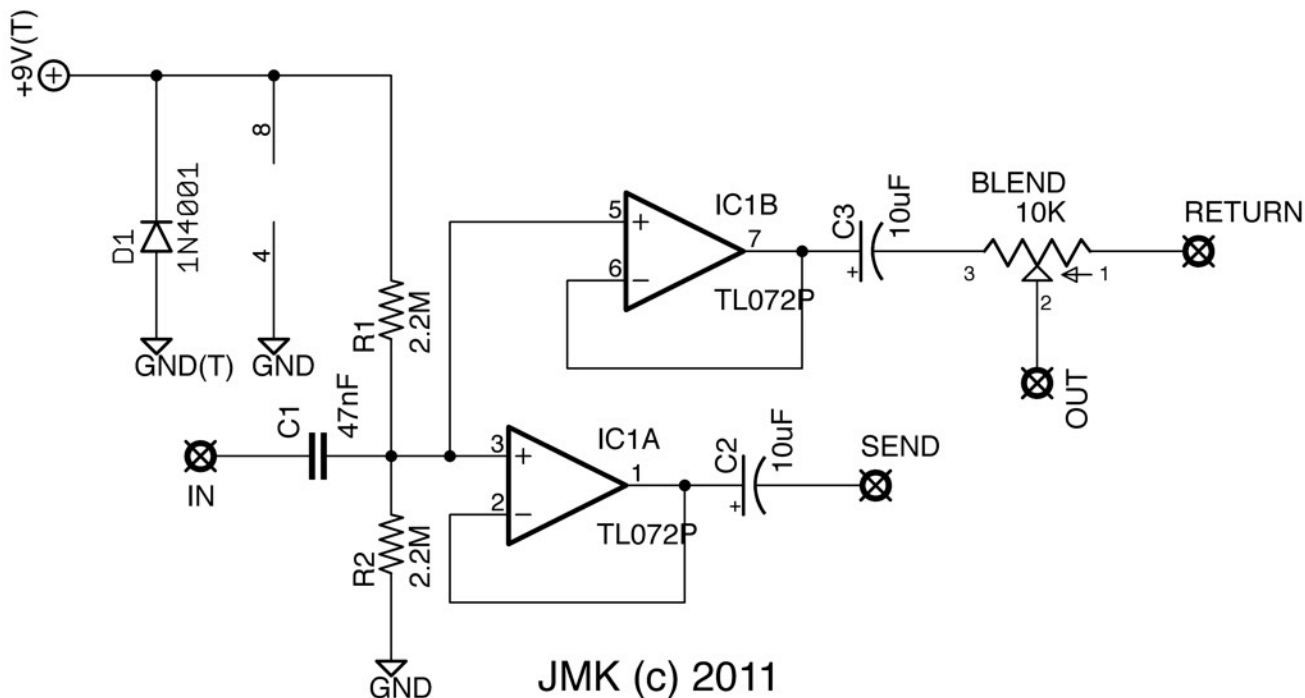
BLEND PEDAL

PCB AND SCHEMATIC ARTWORK (C) 2011 JMK PEDALS
VERSION 1.2: 12/9/2011



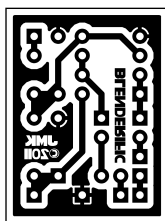
Resistors		Capacitors		Potentiometer	
R1	2.2M	C1	47nF	BLEND	B10K
R2	2.2M	C2	10uF	ICs	
		C3	10uF	IC1	TL072
				Diodes	
				D1	1N4001

This Document is designed for personal use only! Do not use this to create a product for sale without permission of it's owner: jacobkokura@gmail.com



Notes:

- The Blender allows you to blend an effect into your dry signal. At CCW you should have pure dry signal, and at CW you should have full wet signal. At %50, you should have an even amount of wet and dry signal.
- R1 and R2 can be any value between 1M and 10M. Higher values will be noisier, but will provide a higher input impedance. Recommended value is 2.2M giving an input impedance of over 1M.
- You could build this into a volume or expression pedal enclosure to be able to blend an effect in and out of your dry signal, or as a stand alone effect with a knob, or incorporated into an effect pedal.



PCB Measurements:
1.125" Tall x .85" wide

Parts:

- 1/4 watt Axial Film Resistors (Carbon or Metal Film)
- Topmay, Panasonic or Wima Box Capacitors)
- Smallbear electronics recommended for parts (not affiliated with JMK Pedals)

This Document is designed for personal use only! Do not use this to create a product for sale without permission of it's owner: jacobkokura@gmail.com