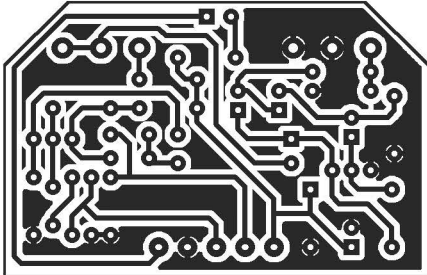
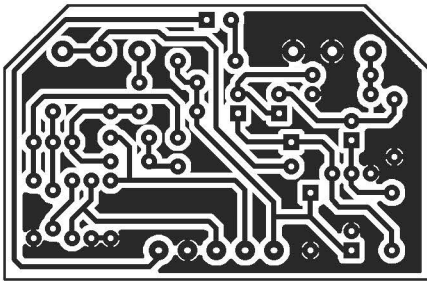


Transfer Image (2.24"x1.5"):



Parts List:

- R1 - 2M2
- R2 - 2k2
- R3 - 4M7
- R4 - 7k5
- R5 - 7k5
- R6 - 1M5
- R7 - 2k2
- R8 - 10k
- R9 - 27k
- R10 - 1M5
- R11 - 1k8
- R12 - 100k
- LDR1 - 2M to 20M dark resistances have been found to work

- C1 - 220n
- C2 - 100n
- C3 - 220n
- C4 - 1u
- C5 - 1u
- C6 - 1u
- C7 - 100u

- D1 - 5mm Clear LED (red, green, whatever)
- D2 - 1n4001
- LED - 5mm Clear LED

- Q1 - MPSA18
- Q2 - MPSA18

- SPEED - 25kB
- DEPTH - 25kB