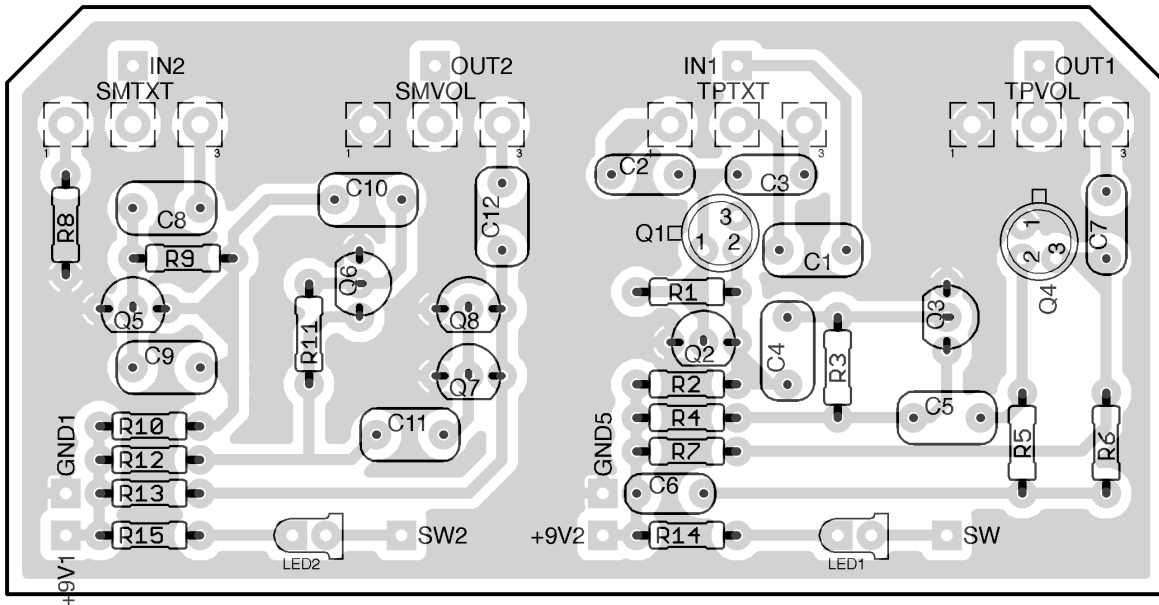


STARFLYER

BASED ON THE DEVIEVER SHOEGAZER
SCHEMATIC ARTWORK & PCB LAYOUT COPYRIGHT 2012 IRMCDERMOTT



RESISTORS		CAPACITORS		POTS	
R1	2M2	C1	100n	SMTXT	A100K
R2	10k	C2	1n	SMVOL	A100K
R3	2M2	C3	20n	TPTXT	A500K
R4	10k	C4	100n	TPVOL	A100K
R5	100k	C5	100n		
R6	100k	C6	1n		
R7	100k	C7	20n		
R8	1k	C8	100n		
R9	2M2	C9	100n		
R10	10k	C10	100n		
R11	3M3	C11	100n		
R12	10k	C12	100n		
R13	10k				
R14	4k7				
R15	4k7				

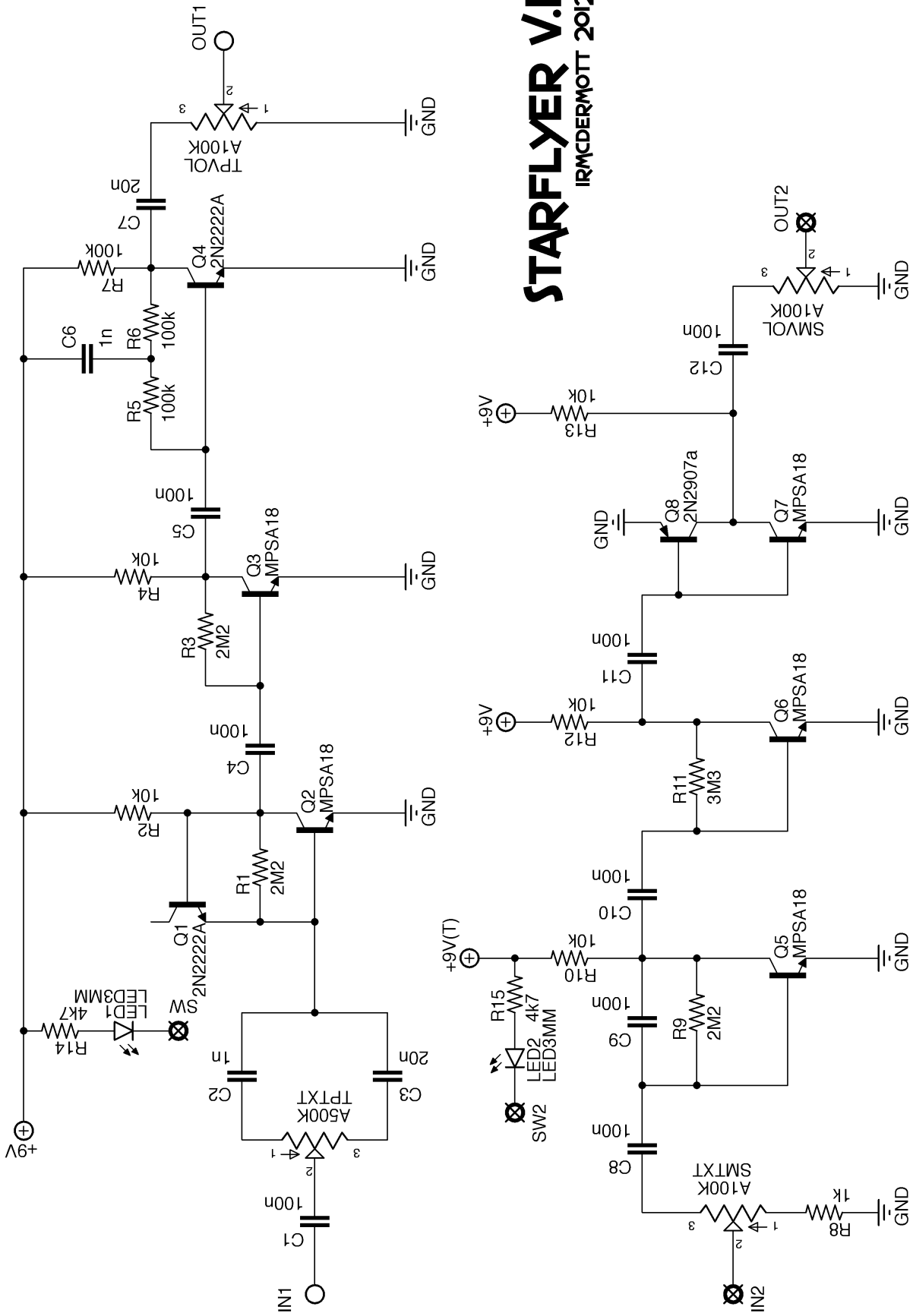
TRANSISTORS	
Q1	2n222A
Q2	MPSA18
Q3	MPSA18
Q4	2n222A
Q5	MPSA18
Q6	MPSA18
Q7	MPSA18
Q8	2N2907A

NOTES!!

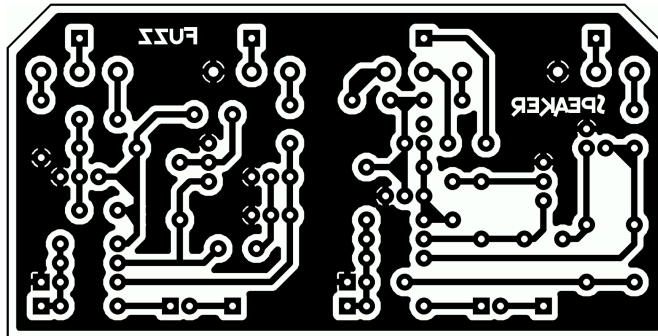
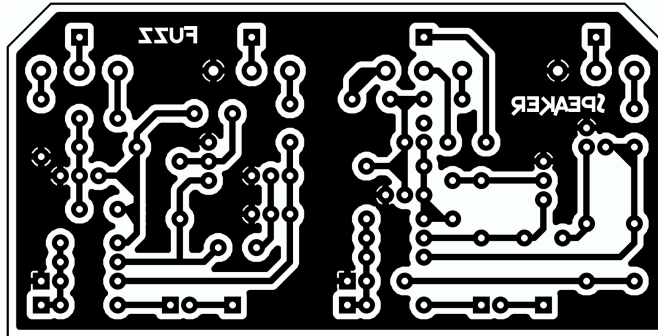
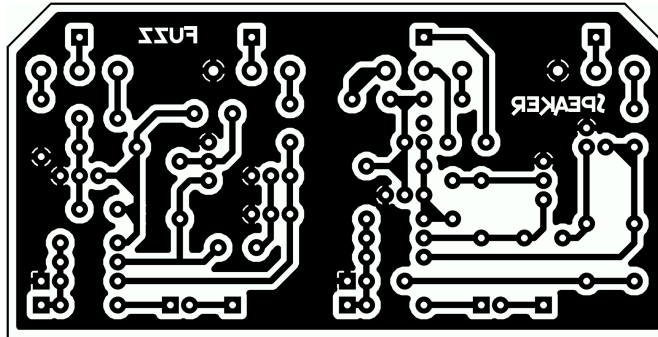
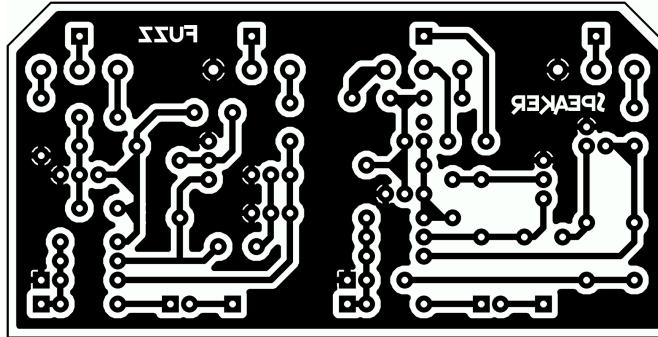
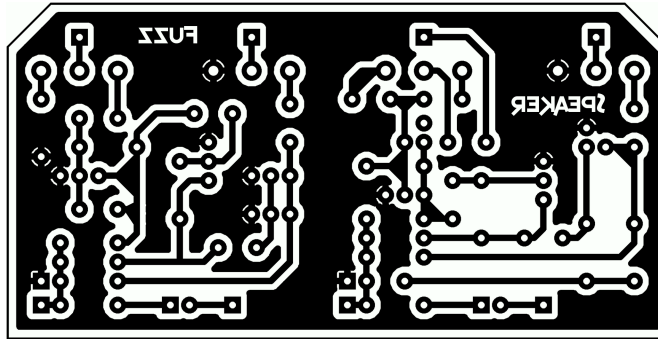
- This circuit is made up of two DeviEver Effects, the Soda Meiser & the Torn's Peaker. The pots have been labeled SM & TP so that you know which side is which if you would like to build just one of these circuits.
- This layout was designed so that you could etch one board and use board mounted pots (drill template attached). However, each side has independent +9V and Grounds so that if you wanted to build just one of these two effects you could just by cutting the transfer artwork in half between the two circuits.
- In my build, I used a 22n cap for C3 & C7 without any trouble.
- The TP circuit can be made into other Devi Ever Effects by simply changing values, transistor orientation, etc. These changes are noted later in this build doc.
- To put the SM into "Chaos" mode, remove C9. To put it in "Noise" mode, remove R9. To make it the Devi Ever Vintage Fuzz Master, flip Q8 180-degrees.
- **KNOWN ISSUE:** The only bug in this that I haven't figured out is that when turned to either extreme, the Texture control on the TP side will feedback when you aren't playing. However, by just adjusting the control slightly above or below each extreme, the issue is resolved. If anyone has any idea of a possible fix, please email me at ian.r.mcdermott@gmail.com. Maybe it's not an issue at all, just the nature of this beast?

STARFLYER V.1

IRMCDERMOTT 2012



PCB ARTWORK FOR ETCHING



TURN THE TP INTO A DEVI EVER...

AENIMA

- Replace R2 with 100k

US FUZZ

- Replace R2 with 220k
- Replace C5 with 10n
- Remove C6 and R6

NEVER DRIVE

- Flip Q1 & Q4 180-degrees

NOTES!!

- I have not tested these mods, however, they are included on the schematics the Devi posted on her forum.

1590 BB ENCLOSURE

4.67" x 3.68" x 1.18"

DRILL TEMPLATE IS UNVERIFIED. USE AT YOUR OWN RISK!!

